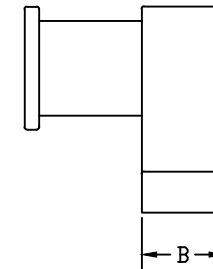
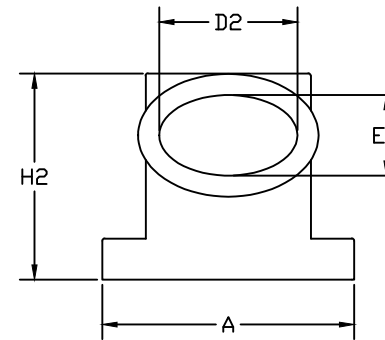
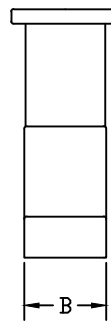
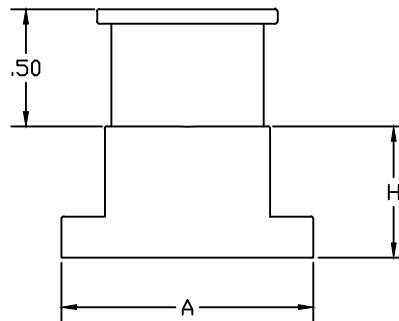
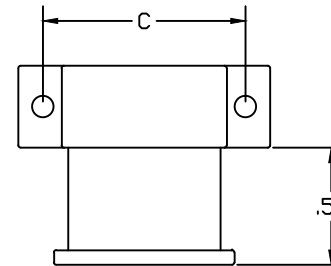
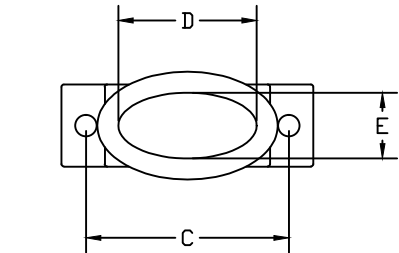


NOTES:

1. SEE TABLE I FOR MATERIAL & FINISH.
2. SEE TABLE II FOR CABLE ENTRY SIZE.
3. SEE TABLE III FOR SHELL SIZE DIMENSIONS.
4. SEE TABLE IV FOR MOUNTING HARDWARE.
5. CONNECTORS SHALL CONFORM TO ALL INTERMATABILITY AND APPLICABLE PERFORMANCE REQUIREMENTS AS SET FORTH BY MIL-DTL-83513.
6. DRAWING IS SUPPORTED BY ELECTRONIC SOLID MODEL, DRAWING IS NOT FULLY DIMENSIONED.
7. BACKSHELL SUPPLIED WITH SPRING BAND AND MOUNTING HARDWARE.

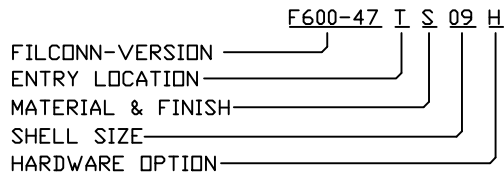
REVISION HISTORY			
REV	DESCRIPTION	DATE	APPROVED



T = TOP ENTRY

S = SIDE ENTRY

PART NUMBER BREAKOUT:

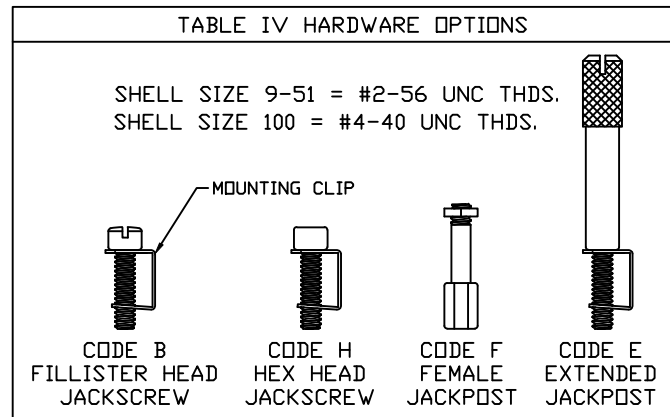


DRAWN: D. DAVIS	DATE: 04/11/13	UNLESS OTHERWISE SPECIFIED DIMENSIONS ARE IN INCHES TOLERANCES ARE: DECIMALS ANGLES .XXX ± .003 ± 1° .XX ± .005 .X ± .010	CHANDLER FILConn ARIZONA			
CHECKED:	DATE:		F600-47 MICRO D BACKSHELLS MASTER DRAWING			
QUALITY:	DATE:					
APPROVED:	DATE:		FSCM: 3L5N9	DWG NUMBER: FILCONN-600-47	SIZE A	REV B
		SCALE: NTS	SHEET: 1	DATASET FILCONN-600-47 SH01 B.DWG	PAGE 1 OF 2	

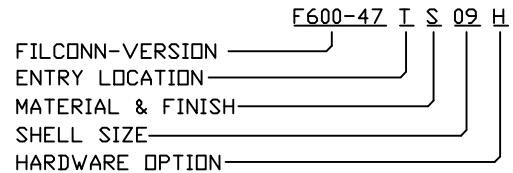
TABLE I MATERIAL & FINISH (ALUMINUM ALLOY UNLESS OTHERWISE NOTED)	
F	Electroless Nickel -85°F to +392°F(-65°C to -200°C)
W	Olive Drab Cadmium over Electroless Nickel plate, -85°F to +347°F(-65°C to +175°C)
NT	Nickel Teflon (Consult factory for details)
Z	Yellow Cadmium over Electroless Nickel Plate.
E	CHEM FILM

TABLE II CABLE ENTRY DIMENSIONS				
	D	E	D2	E2
09	.312	.280	.260	.190
15	.420	.280	.430	.250
21	.590	.280	.590	.345
25	.690	.280	.690	.375
31	.820	.280	.830	.440
37	.970	.280	.980	.500
51	.920	.312	.930	.500
100	1.260	.360	1.320	.625

TABLE III SHELL SIZE DIMENSIONS					
SHELL SIZE	A	B	C	H	H2
09	.775	.350	.565	.32	.72
15	.925	.350	.715	.44	.78
21	1.075	.350	.865	.56	.88
25	1.175	.350	.965	.62	.91
31	1.325	.350	1.115	.68	.97
37	1.475	.350	1.265	.72	1.03
51	1.425	.400	1.215	.75	1.03
100	2.160	.450	1.800	.81	1.16



PART NUMBER BREAKOUT:



CHANDLER		FILConn		ARIZONA	
F600-47 MICRO D BACKSHELLS MASTER DRAWING					
FSCM: 3L5N9	DWG NUMBER: FILCONN-600-47	SIZE A	REV B		
SHEET: 1	DATASET FILCONN-600-47 SH01 B.DWG	PAGE 2	OF 2		