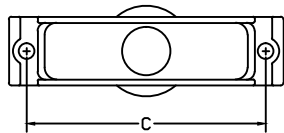
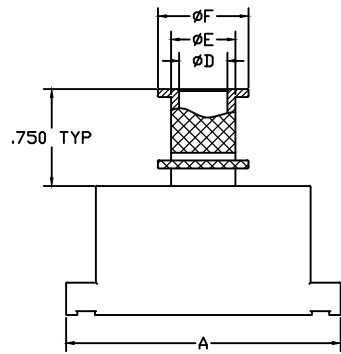


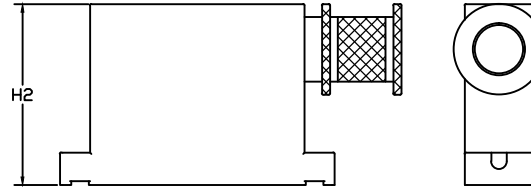
NOTES:

1. SEE TABLE I FOR MATERIAL & FINISH.
2. SEE TABLE II FOR CABLE ENTRY SIZE.
3. SEE TABLE III FOR SHELL SIZE DIMENSIONS.
4. SEE TABLE IV FOR MOUNTING HARDWARE.
5. CONNECTORS SHALL CONFORM TO ALL INTERMATABILITY AND APPLICABLE PERFORMANCE REQUIREMENTS AS SET FORTH BY MIL-DTL-24308.
6. DRAWING IS SUPPORTED BY ELECTRONIC SOLID MODEL, DRAWING IS NOT FULLY DIMENSIONED.
7. BACKSHELL SUPPLIED WITH SPRING BAND AND MOUNTING HARDWARE. (SEE TABLE II FOR SPRING BAND PART NUMBERS)

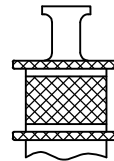
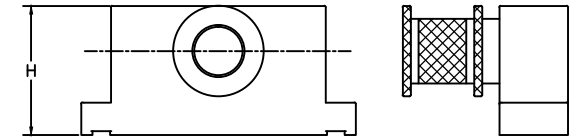
T = TOP ENTRY



E = END ENTRY

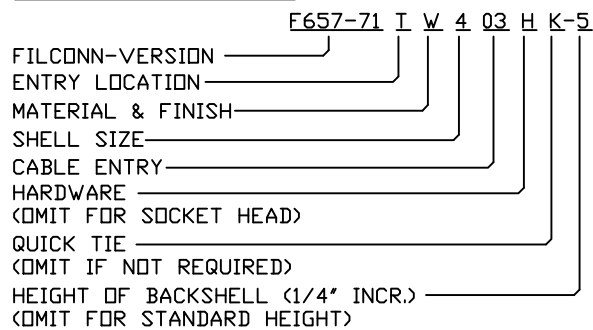


S = SIDE ENTRY



K = QUICK TIE OPTION

PART NUMBER BREAKOUT:



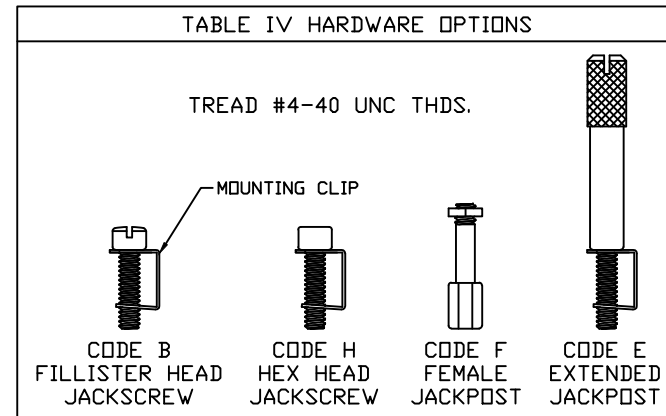
REVISION HISTORY			
REV	DESCRIPTION	DATE	APPROVED

DRAWN: M.BEEVERS	DATE: 08/14/14	UNLESS OTHERWISE SPECIFIED DIMENSIONS ARE IN INCHES TOLERANCES ARE: DECIMALS ANGLES .XXX ± .015 ± 1° .XX ± .020 .X ± .030	CHANDLER FILConn ARIZONA			
CHECKED:	DATE:		F657-71 D-SUB BACKSHELLS CUSTOMER DRAWING			
QUALITY:	DATE:		FSCM: 3L5N9	DWG NUMBER: FILCONN-657-71	SIZE A	REV IR
APPROVED:	DATE:		SCALE: NTS	SHEET: 1	DATASET FILCONN-657-71 SH01.DWG	PAGE 1 OF 2

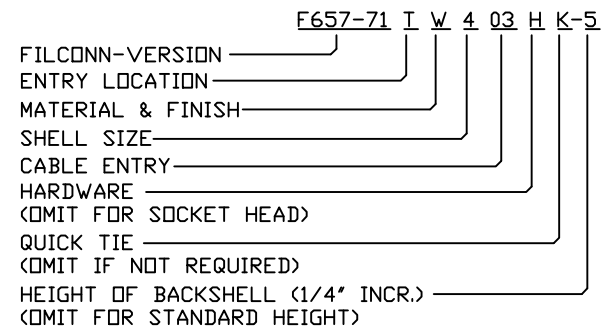
TABLE I MATERIAL & FINISH (ALUMINUM ALLOY UNLESS OTHERWISE NOTED)	
F	Electroless Nickel -85°F to +392°F(-65°C to -200°C)
W	Olive Drab Cadmium over Electroless Nickel plate, -85°F to +347°F(-65°C to +175°C)
NT	Nickel Teflon (Consult factory for details)
Z	Yellow Cadmium over Electroless Nickel Plate.
E	CHEM FILM

TABLE II CABLE ENTRY DIMENSIONS						
ENTRY SIZE	D	E	F	H	H2	SPRING BAND P/N
31	.188	.312	.512	1.00	1.22	FCSB01
02	.250	.375	.575	1.00	1.28	FCSB01
32	.312	.438	.638	1.00	1.34	FCSB01
03	.375	.500	.700	1.00	1.40	FCSB02
33	.438	.562	.762	1.00	1.43	FCSB02
04	.500	.625	.825	1.00	1.50	FCSB02
05	.562	.688	.888	1.00	1.62	FCSB03

TABLE III SHELL SIZE DIMENSIONS				
SHELL SIZE	A MAX	B	C	MAX CABLE ENTRY
1	1.25	.53	.984	03
2	1.58	.53	1.312	33
3	2.13	.53	1.852	33
4	2.77	.53	2.500	33
5	2.68	.66	2.406	04
6	2.77	.73	2.500	05



PART NUMBER BREAKOUT:



CHANDLER		FILConn		ARIZONA	
F657-71 D-SUB BACKSHELLS CUSTOMER DRAWING					
FSCM: 3L5N9	DWG NUMBER: FILCONN-657-71	SIZE A	REV IR		
SHEET: 2	DATASET FILCONN-657-71 SH01.DWG	PAGE 2	OF 2		