

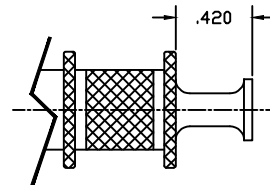
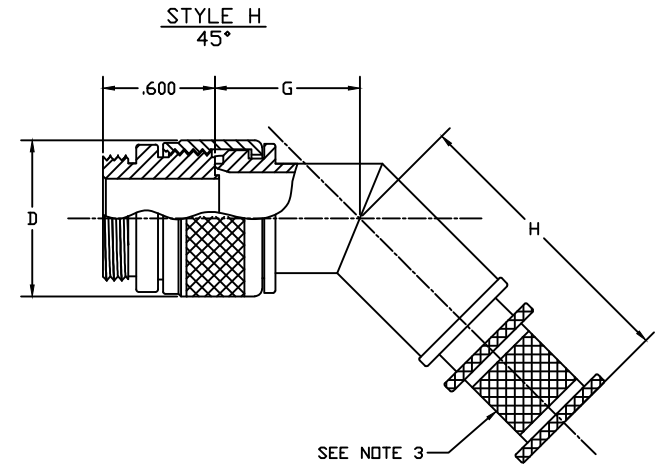
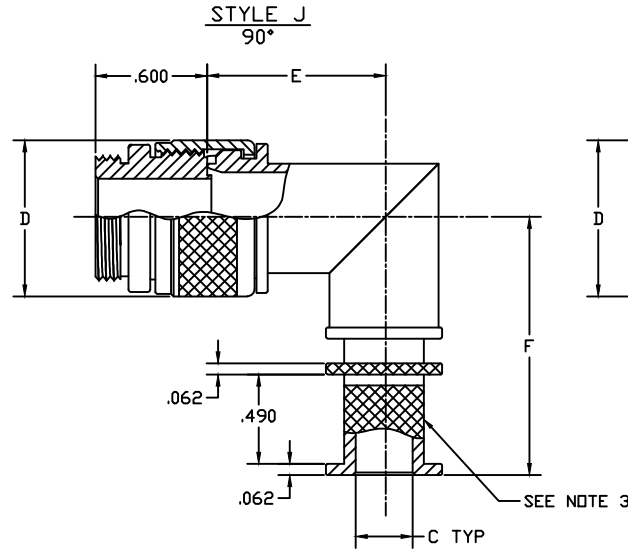
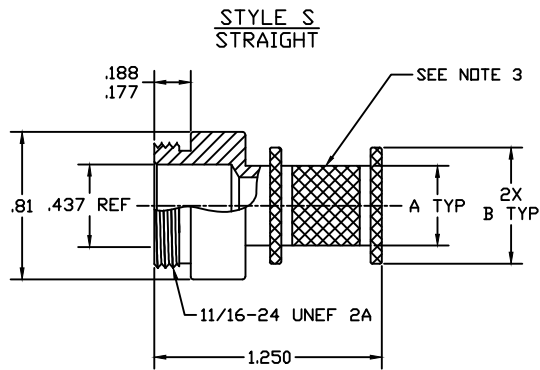
NOTES:

1. SEE TABLE I FOR MATERIAL & FINISH.
2. SEE TABLE II FOR CABLE ENTRY & SIZE DIMENSIONS.
3. CROSSHATCH KNURL OR RIDGES AT MFG OPTION.
4. CONNECTORS SHALL CONFORM TO ALL INTERMATABILITY AND APPLICABLE PERFORMANCE REQUIREMENTS AS SET FORTH BY MIL-C-55116.
5. DRAWING IS SUPPORTED BY ELECTRONIC SOLID MODEL, DRAWING IS NOT FULLY DIMENSIONED.

*CONNECTOR VIEWS ARE FOR REFERENCE ONLY.

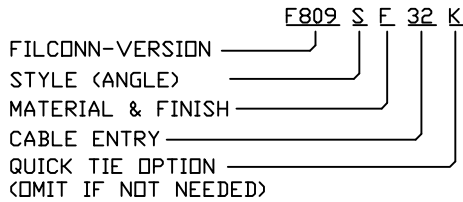
REVISION HISTORY

REV	DESCRIPTION	DATE	APPROVED
-----	-------------	------	----------



QUICK TIE OPTION
AVAILABLE ON STYLES
S, F & H

PART NUMBER BREAKOUT:

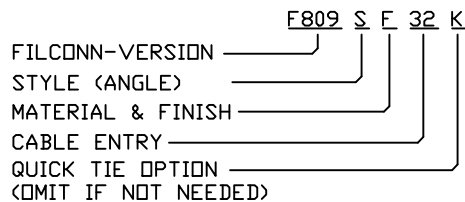


DRAWN: D. DAVIS	DATE: 05/04/13	UNLESS OTHERWISE SPECIFIED DIMENSIONS ARE IN INCHES TOLERANCES ARE: DECIMALS ANGLES .XXX ± .003 ± 1° .XX ± .005 .X ± .010	CHANDLER FILConn ARIZONA		
CHECKED:	DATE:		F809 MIL-C-55116 BACKSHELLS MASTER DRAWING		
QUALITY:	DATE:				
APPROVED:	DATE:		FSCM: 3L5N9	DWG NUMBER: FILCONN-809	SIZE A
		SCALE: NTS	SHEET: 1	DATASET FILCONN-809 SH01 A.DWG	PAGE 1 OF 2

TABLE I MATERIAL & FINISH (ALUMINUM ALLOY UNLESS OTHERWISE NOTED)	
F	Electroless Nickel -85°F to +392°F(-65°C to -200°C)
W	Olive Drab Cadmium over Electroless Nickel plate, -85°F to +347°F(-65°C to +175°C)
NT	Nickel Teflon (Consult factory for details)
Z	Yellow Cadmium over Electroless Nickel Plate.

TABLE II CABLE ENTRY & SHELL DIMENSIONS								
CABLE ENTRY DES.	A	B	C	D	E ±.060	F MAX	G	H
01	.250	.450	.125	.617	.593	1.280	.39	.89
31	.312	.512	.188	.617	.625	1.280	.39	.89
02	.375	.575	.250	.734	.656	1.360	.42	.92
32	.438	.638	.312	.858	.687	1.420	.44	.94
03	.500	.700	.375	.858	.719	1.420	.44	.94
33	.562	.762	.438	.984	.750	1.480	.46	.97
04	.625	.825	.500	.984	.781	1.480	.46	.97
34	.688	.888	.562	1.112	.812	1.540	.48	.99
05	.750	.950	.625	1.112	.844	1.540	.48	.99
35	.812	1.012	.688	1.198	.875	1.560	.50	1.00
06	.875	1.075	.750	1.323	.906	1.630	.52	1.02
36	.938	1.138	.812	1.323	.937	1.630	.52	1.02
07	1.000	1.200	.875	1.448	.969	1.690	.55	1.06
37	1.062	1.262	.938	1.448	1.000	1.690	.55	1.06
08	1.125	1.325	1.000	1.573	1.031	1.710	.57	1.09
38	1.188	1.388	1.062	1.573	1.062	1.710	.57	1.09

PART NUMBER BREAKOUT:



CHANDLER		FILConn		ARIZONA	
F809 MIL-C-55116 BACKSHELLS MASTER DRAWING					
FSCM: 3L5N9	DWG NUMBER: FILCONN-809	SIZE A	REV A		
SHEET: 1	DATASET FILCONN-809 SH01 A.DWG	PAGE 2	OF 2		