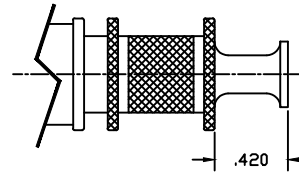


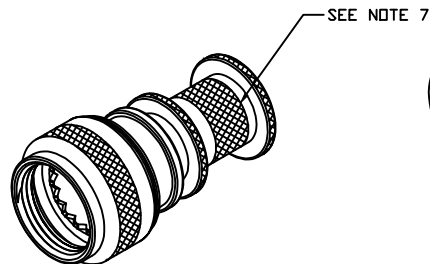
NOTES:

1. SEE TABLE I FOR CONNECTOR CODE.
2. SEE TABLE II FOR MATERIAL & FINISH.
3. SEE TABLE III FOR CABLE ENTRY SIZE.
4. SEE TABLE IV FOR SIZE & DIMENSIONS.
5. SEE TABLE V FOR MAX CABLE ENTRY.
6. SPRING BAND INCLUDED.
7. CROSSHATCH KNURL OR RIDGES AT MFG OPTION.
8. CONNECTORS SHALL CONFORM TO ALL INTERMATABILITY AND APPLICABLE PERFORMANCE REQUIREMENTS AS SET FORTH BY MIL-DTL-38999, MIL-DTL-26482, MIL-DTL-5015 & MIL-DTL-85049.
9. DRAWING IS SUPPORTED BY ELECTRONIC SOLID MODEL, DRAWING IS NOT FULLY DIMENSIONED.

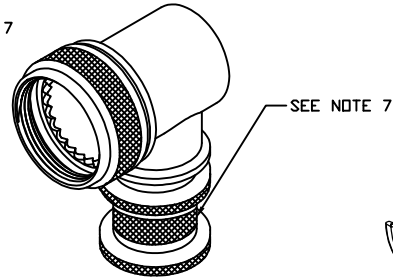
REVISION HISTORY			
REV	DESCRIPTION	DATE	APPROVED



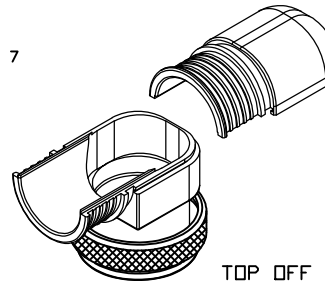
QUICK TIE OPTION



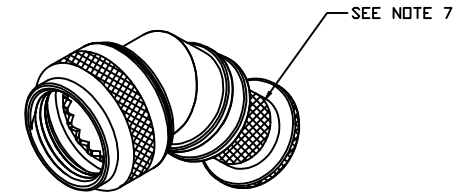
STYLE S
STRAIGHT



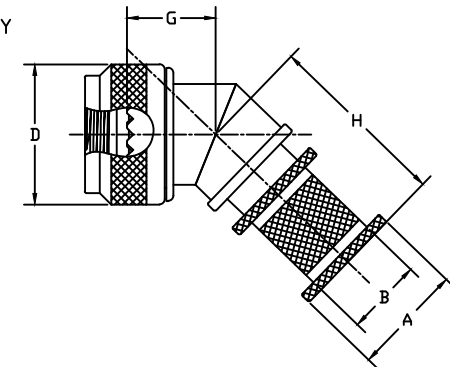
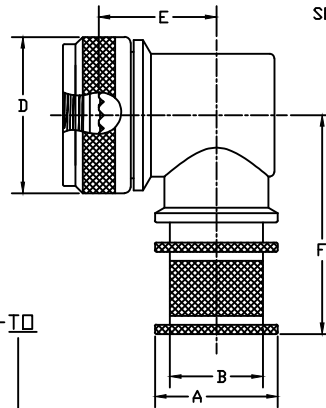
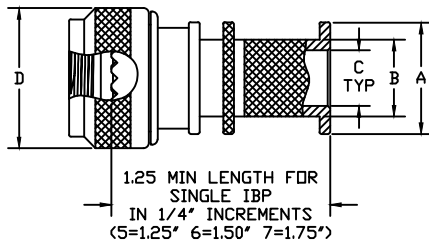
STYLE J
90°



TOP OFF OPTION
AVAILABLE ON
STYLE J & H ONLY
"TO"



STYLE H
45°



PART NUMBER BREAKOUT:

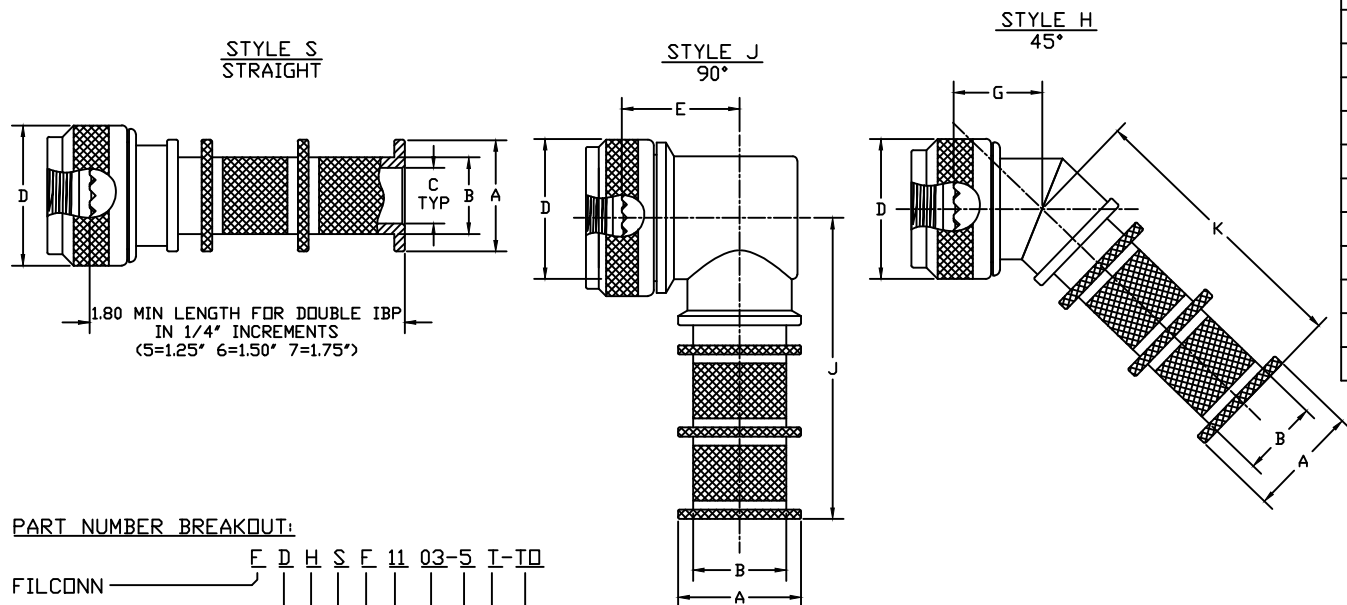
FILCONN _____ E D H S E 11 03-5 I-TO
 DOUBLE IBP _____
 (OMIT IF NOT NEEDED)
 CONNECTOR CODE _____
 STYLE (ANGLE) _____
 MATERIAL & FINISH _____
 CONNECTOR SIZE _____
 CABLE ENTRY _____
 LENGTH (STRAIGHT ONLY) _____
 QUICK TIE OPTION _____
 (OMIT IF NOT NEEDED)
 TOP OFF OPTION _____
 (STYLE J & H ONLY, OMIT IF NOT NEEDED)

DRAWN: D. DAVIS	DATE: 1/30/13	UNLESS OTHERWISE SPECIFIED DIMENSIONS ARE IN INCHES TOLERANCES ARE: DECIMALS ANGLES .XXX ± .015 ± 1° .XX ± .020 .X ± .030	CHANDLER FILConn ARIZONA		
CHECKED:	DATE:		FILCONN SPRING BAND BACKSHELL CUSTOMER DRAWING		
QUALITY:	DATE:				
APPROVED:	DATE:		FSCM: 3L5N9	DWG NUMBER: FILCONN-SPRING BAND	SIZE A
		SCALE: NTS	SHEET: 1	DATASET FILCONN SPRING BAND SH01.DWG	PAGE 1 OF 3

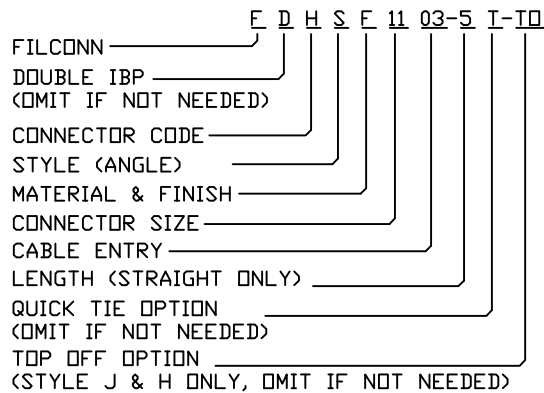
NOTES:

1. SEE TABLE I FOR CONNECTOR CODE.
2. SEE TABLE II FOR MATERIAL & FINISH.
3. SEE TABLE III FOR CABLE ENTRY SIZE.
4. SEE TABLE IV FOR SIZE & DIMENSIONS.
5. SEE TABLE V FOR MAX CABLE ENTRY.
6. SPRING BAND INCLUDED.
7. CROSSHATCH KNURL OR RIDGES AT MFG OPTION.
8. CONNECTORS SHALL CONFORM TO ALL INTERMATABILITY AND APPLICABLE PERFORMANCE REQUIREMENTS AS SET FORTH BY MIL-DTL-38999, MIL-DTL-26482, MIL-DTL-5015 & MIL-DTL-85049.
9. DRAWING IS SUPPORTED BY ELECTRONIC SOLID MODEL, DRAWING IS NOT FULLY DIMENSIONED.

CONN. CODE F, D & A SHELL SIZE	CONN. CODE H SHELL SIZE	K REF	J MAX
8		1.442	1.832
	9/A	1.442	1.832
10		1.472	1.912
	11/B	1.472	1.912
12		1.492	1.972
	13/C	1.492	1.972
14		1.522	2.032
	15/D	1.522	2.032
16		1.542	2.092
	17/E	1.542	2.092
18		1.552	2.112
	19/F	1.522	2.112
20		1.572	2.182
	21/G	1.572	2.182
22		1.612	2.242
	23/H	1.612	2.242
24		1.642	2.262
	25/J	1.642	2.262



PART NUMBER BREAKOUT:



CHANDLER		FILConn		ARIZONA	
FILCONN SPRING BAND BACKSHELLS CUSTOMER DRAWING					
FSCM: 3L5N9	DWG NUMBER: FILCONN-SPRING BAND	SIZE A	REV IR		
SHEET: 2	DATASET FILCONN SPRING BAND SH01.DWG	PAGE 2	OF 3		

TABLE I CONNECTOR CODE	
H	MIL-C-38999 SERIES III & IV
F	MIL-C-38999 SERIES I & II
D	MIL-C-26482 I
A	MIL-C-26482 II, MIL-C-5051 (MS3400)

TABLE II MATERIAL & FINISH (ALUMINUM ALLOY UNLESS OTHERWISE NOTED)	
F	Electroless Nickel -85°F to +392°F(-65°C to -200°C)
W	Olive Drab Cadmium over Electroless Nickel plate, -85°F to +347°F(-65°C to +175°C)
NT	Nickel Teflon (Consult factory for details)
Z	Yellow Cadmium over Electroless Nickel Plate.

TABLE III CABLE ENTRY DIMENSIONS				
CABLE ENTRY DES.	A	B	C	E ±.080
01	.450	.250	.125	.593
31	.512	.312	.188	.625
02	.575	.375	.250	.656
32	.638	.438	.312	.687
03	.700	.500	.375	.719
33	.762	.562	.438	.750
04	.825	.625	.500	.781
34	.888	.688	.562	.812
05	.950	.750	.625	.844
35	1.012	.812	.688	.875
06	1.075	.875	.750	.906
36	1.138	.938	.812	.937
07	1.200	1.000	.875	.969
37	1.262	1.062	.938	1.000
08	1.325	1.125	1.000	1.031
38	1.388	1.188	1.062	1.062
09	1.450	1.250	1.125	1.094
10	1.578	1.375	1.250	1.156

TABLE IV SHELL SIZE & DIMENSIONS						
CONN. CODE F,D & A SHELL SIZE	CONN. CODE H SHELL SIZE	D	F MAX	G	H	
8		.65	1.280	.390	.890	
	9/A	.77	1.280	.390	.890	
10		.77	1.360	.420	.920	
	11/B	.82	1.360	.420	.920	
12		.89	1.420	.440	.940	
	13/C	.94	1.420	.440	.940	
14		1.02	1.480	.460	.970	
	15/D	1.07	1.480	.460	.970	
16		1.15	1.540	.480	.990	
	17/E	1.21	1.540	.480	.990	
18		1.23	1.560	.500	1.000	
	19/F	1.36	1.560	.500	1.000	
20		1.36	1.630	.520	1.020	
	21/G	1.48	1.630	.520	1.020	
22		1.48	1.690	.550	1.060	
	23/H	1.60	1.690	.550	1.060	
24		1.60	1.710	.570	1.090	
	25/J	1.70	1.710	.570	1.090	

TABLE V MAX CABLE ENTRY		
CONN. CODE F,D & A SHELL SIZE	CONN. CODE H SHELL SIZE	MAX CABLE ENTRY
8		02
	9/A	31
10		03
	11/B	32
12		04
	13/C	33
14		05
	15/D	34
16		06
	17/E	35
18		07
	19/F	36
20		08
	21/G	37
22		09
	23/H	38
24		10
	25/J	38

PART NUMBER BREAKOUT:

FILCONN ——— F D H S F 11 03-5 I-10
DOUBLE IBP ———
(OMIT IF NOT NEEDED)
CONNECTOR CODE ———
STYLE (ANGLE) ———
MATERIAL & FINISH ———
CONNECTOR SIZE ———
CABLE ENTRY ———
LENGTH (STRAIGHT ONLY) ———
QUICK TIE OPTION ———
(OMIT IF NOT NEEDED)
TOP OFF OPTION ———
(STYLE J & H ONLY, OMIT IF NOT NEEDED)

CHANDLER		FILConn		ARIZONA	
FILCONN SPRING BAND BACKSHELLS CUSTOMER DRAWING					
FSCM: 3LSN9	DWG NUMBER: FILCONN-SPRING BAND	SIZE A	REV IR		
SHEET: 2	DATASET FILCONN SPRING BAND SH01.DWG	PAGE 3	OF	3	